

TBW Under Tray Install

Hyundai Elantra N (2022-2025)

STUDY THESE INSTRUCTIONS BEFORE INSTALLATION. INSTALLER MUST HAVE A KNOWLEDGE OF AUTOMOBILE SYSTEMS. IF UNFAMILIAR WITH OUTLINED INSTRUCTIONS, WE RECOMMEND INSTALLATION BE COMPLETED BY A QUALIFIED PROFESSIONAL.

Tools Needed for Install:

- Flathead screwdriver
- 10mm socket/wrench
- Drill
- Rivet Nut Tool

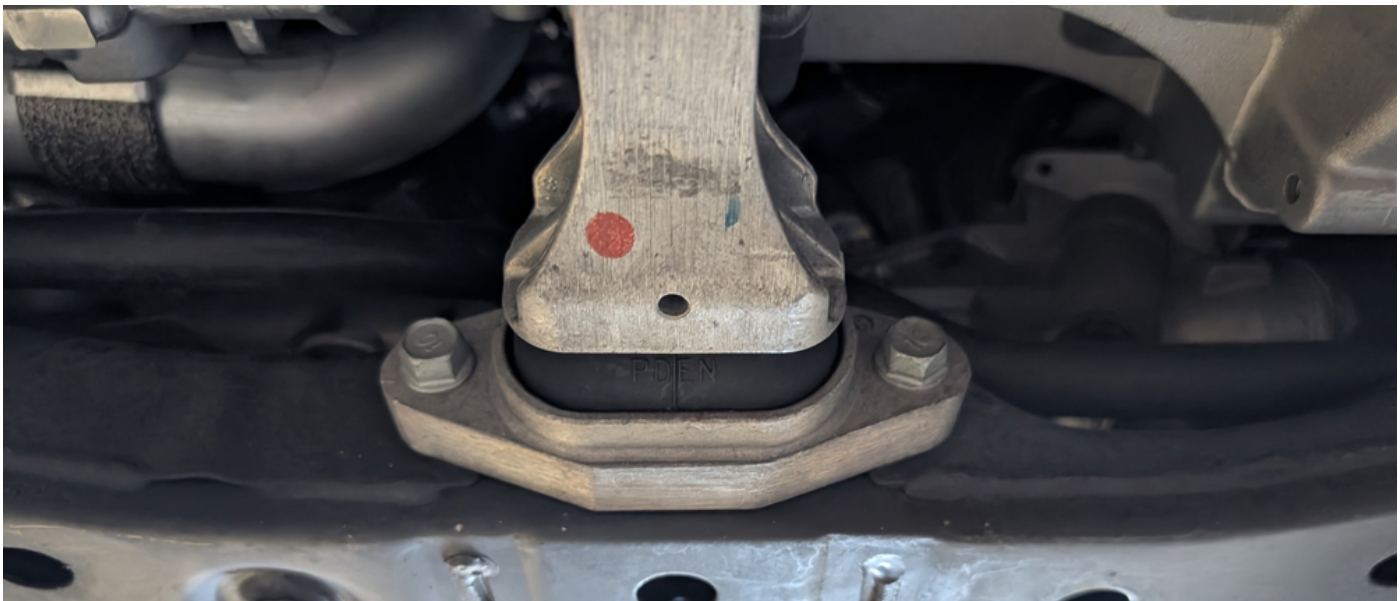
WARNING!

CAUTION NEEDS TO BE TAKEN WHEN PERFORMING MAINTENANCE OR UPGRADES TO YOUR VEHICLE. OBSERVE AND ABIDE BY ANY LABELS ON COMPONENTS AND TOOLS. IF YOU HAVE ANY QUESTIONS, CONSULT WITH A PROFESSIONAL MECHANIC OR CONTACT TBW PERFORMANCE FOR MORE INFORMATION.

#1. Remove the OEM Under Tray Panels

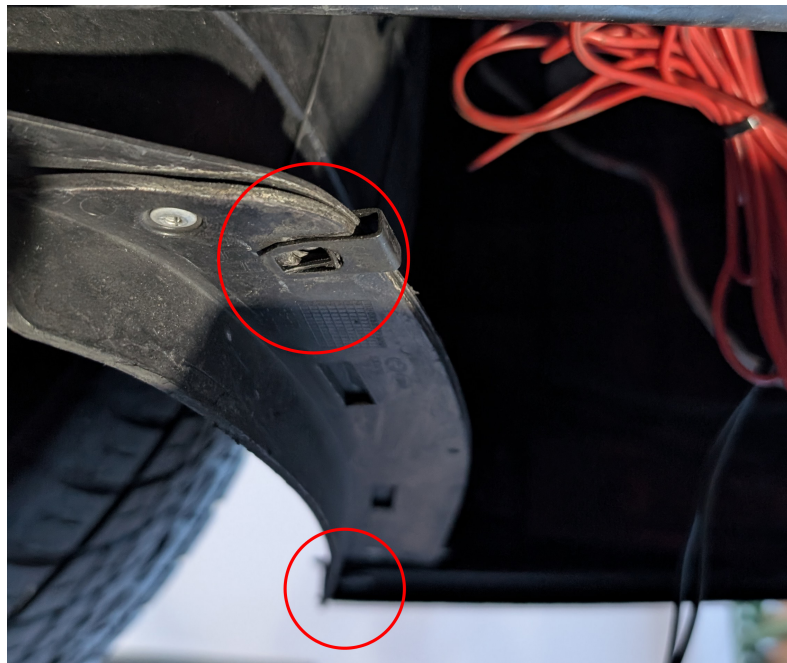


#2) Install rear support bracket here: Remove and Install 1 bolt at a time to ensure the mount doesn't sag





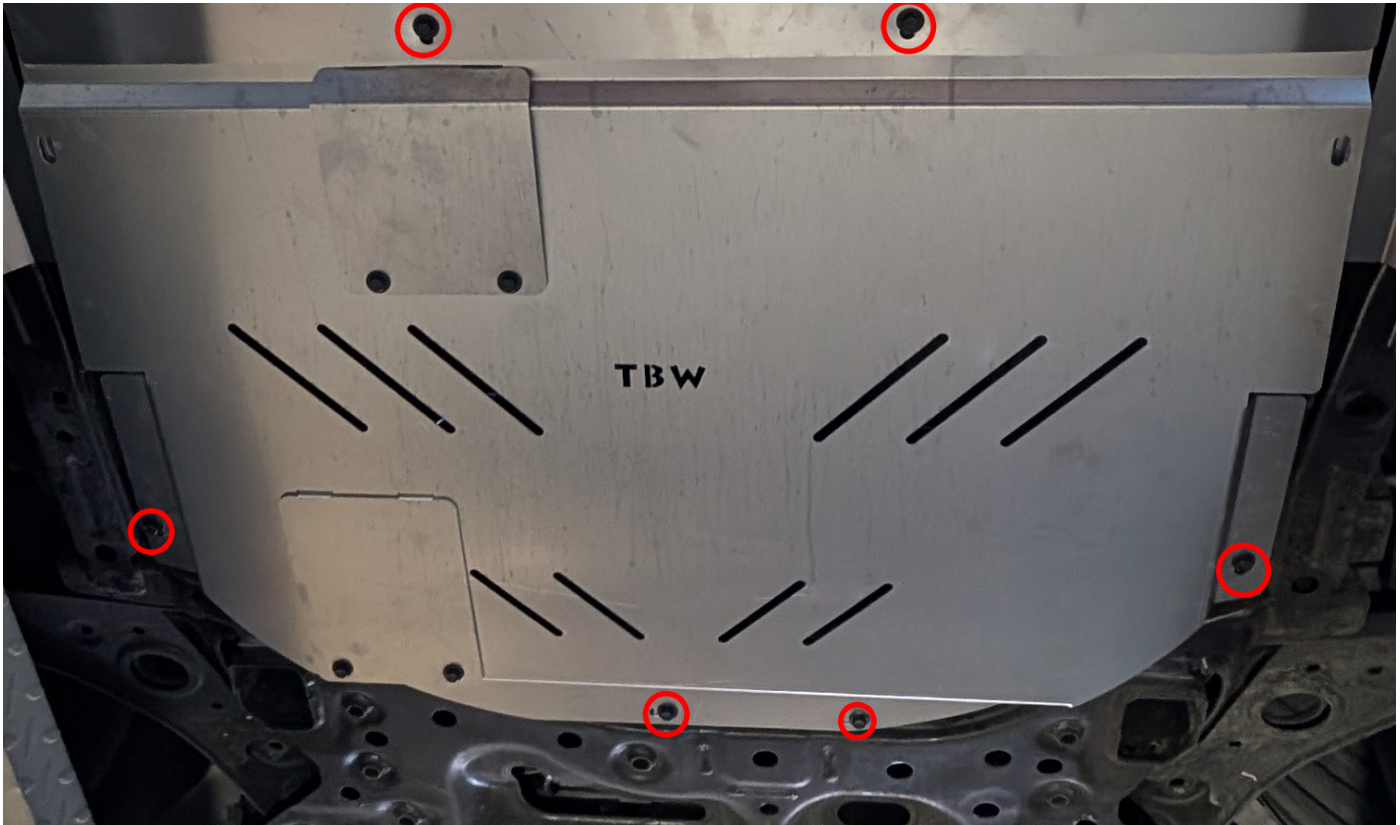
#3) Install extruded u-nuts (6mm) in these locations on each so we can install the corner pieces



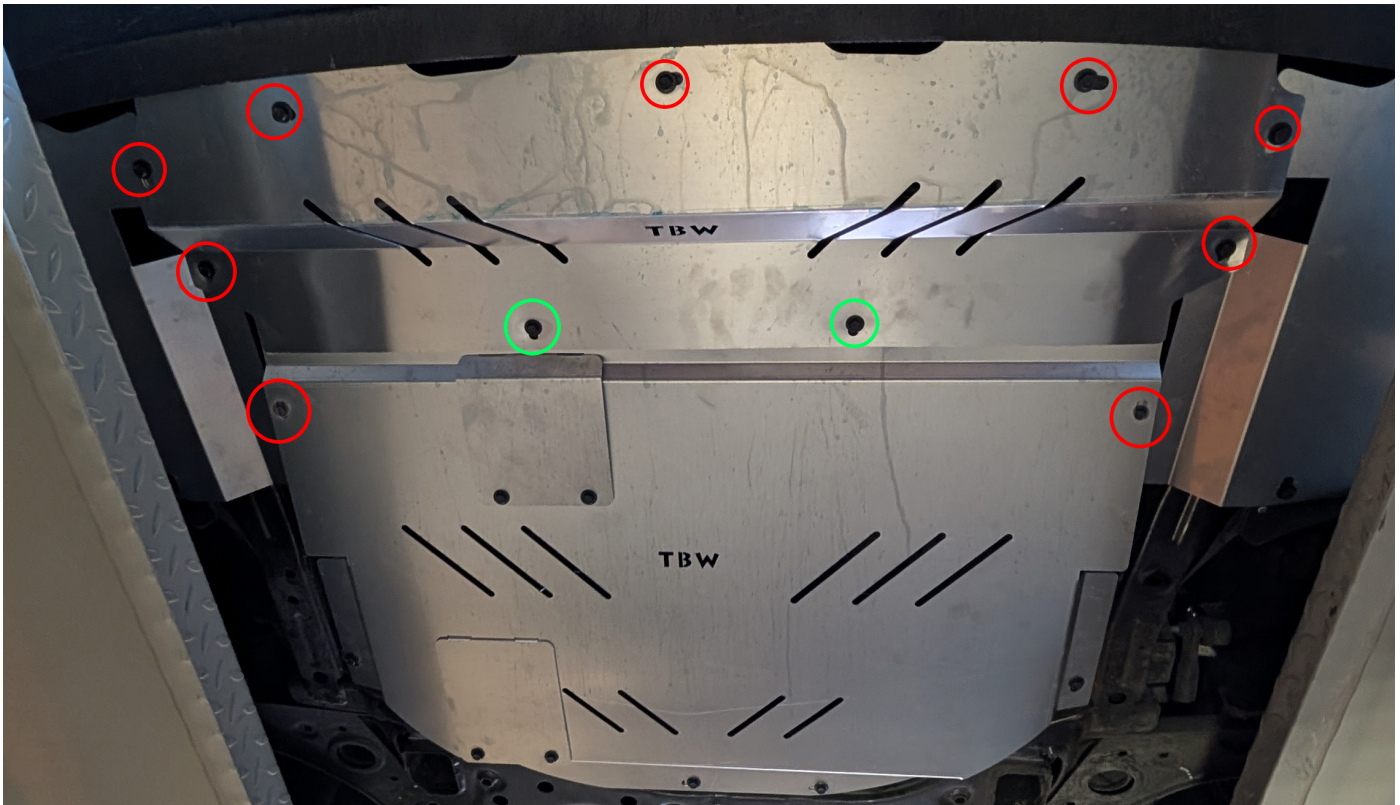
#4) Install the Corner pieces on each side – use three (3) of the M6 bolts to secure each corner piece. U-nuts will be pre-installed on the corner pieces for where the center section overlaps



#5) Install the Rear (Main) panel next – use six (6) of the M6 bolts in the marked locations (RED)



#6) Install front Panel to bumper using M6 bolts (RED) – Bolts at the radiator support (Green) will be removed and reinstalled as the front panel will overlap in this location. Front Panel will also overlap and attach to the bumper corner pieces.



WITH ALL BOLTS IN PLACE – TIGHTEN DOWN TO APPROX 15-20 FT LBS. Do NOT tighten any bolts down UNTIL all are in place